

IN HOPPE



www.in-hoppe.fr

INTERNATIONAL NETWORK

Historical and Osteoarchaeological Past Populations Exploration

Paleodemography
History
Mathematics
Anthropology
Geography
Microbiology
Archaeology
Geosciences
Historical Demography
Paleopathology

Furthering our knowledge of past populations to better understand the present



THE IN-HOPPE NETWORK

- Develops a multi-disciplinary approach to the demography of past populations, making use of all available sources (textual, iconographic, ethnological, archaeological or biological)
- Ensures pooling of methods and know-how from the various disciplinary fields involved
- Supports scientific cooperation between French and foreign scholars and research teams to organize special events or set up research projects
- Encourages teamwork to respond to specific calls for projects
- Transmits knowledge through targeted training programmes



RESEARCH THEMES

- **Environmental and health impact**
Analysis of relations between the environment, socioeconomic and cultural contexts, and infectious diseases
- **Migration and variability**
Studies of population mixing and biological variability; coupling of textual records or biological data with genetic information
- **Nutrition and growth**
Study of the relations between diet and social, economic or cultural factors; impacts of chronic or severe malnutrition
- **Concepts and methods**
Development of theoretical frameworks and creation of tools to guarantee the scientific validity of research conducted under the various themes

The In Hoppe network promotes and develops research through pooling of skills and infrastructure.

1788									
DEPARTEMENT BOUCHES-du-RHONE COMMUNE									
MOIS (2)	ACTE (3)	SEXE (4)	LEG. (5)	E.M. (6)	AGE (7)	GENER. (8)	ORIGLOU (9)	RESID. (10)	RESID.OU PROF. (11)
1788	1	b	a	a					
1788	2	b	bu	a	a	b	m	6	
1788	3	b	a	a	a	b	b		
1788	4	b	b	b	b	b	a		
1788	5	b	b	b	b	a	a		
1788	6	b	m	p					



WHY JOIN IN-HOPPE?

IN-HOPPE

- Is a platform for dialogue and cooperation with fellow researchers
- Enhances your international mobility
- Facilitates your access to data sources (databases, reference collections, statistical tools, etc.), and encourages sharing of methodological and practical know-how
- Promotes and disseminates your work (conferences, seminars and workshops, articles, co-authored books)

$$\hat{P}_j = \sum_{i=1}^l \pi_i \int_{j|i}$$

Join the In-Hoppe network and help to build a unique, dedicated research resource.



HOW TO JOIN

• As an individual

The In-Hoppe network is open to all scholars and doctoral students interested in one or more of its themes, whether or not you are affiliated to a research or teaching institution. To become a member, your request should be accompanied by letters from two sponsors.

• As an institution

Institutional partners wishing to join the network should submit a request specifying their research themes, their research team members, their reasons for joining, their technical and material resources available to network members.

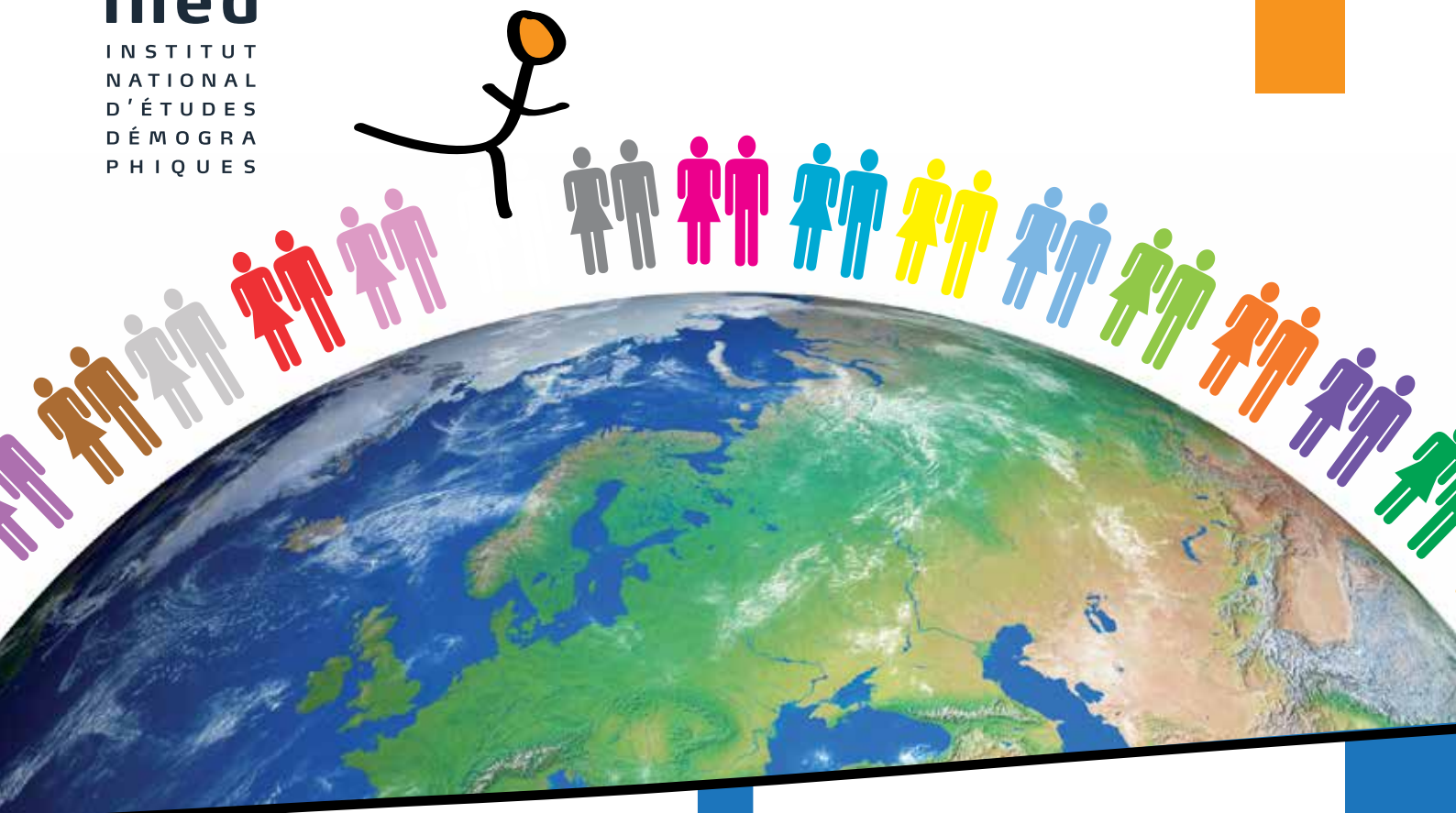




ined

INSTITUT
NATIONAL
D'ÉTUDES
DÉMOGRA
PHIQUES

www.ined.fr



CONTACT US

The network is coordinated by INED. Isabelle Séguy (INED) is responsible for managing the network and its scientific activities. She is assisted by a steering committee representing the network's four research themes.

In-Hoppe has a scientific committee to oversee and promote the network's activities, to support its partnership initiatives, its expert activities and its responses to calls for bids.

For further information:

- Isabelle Séguy (seguy@ined.fr)
- Luc Buchet (luc.buchet@ined.fr)

REGISTER ONLINE

To join the network online:

<https://in-hoppe-reseau.web.ined.fr/reseau/login>

Content: Sophie Quinchard

Layout: Isabelle Milan

Photo and illustration credits: Skull©, rights reserved, Pompei © smudger 21 - Fotolia, Mediaeval painting © BN, Inrap dig © Véronique Gallien, DNA © mitay20 - Fotolia, page Henry manual © INED, planet © jeremyculpdesign - Fotolia.